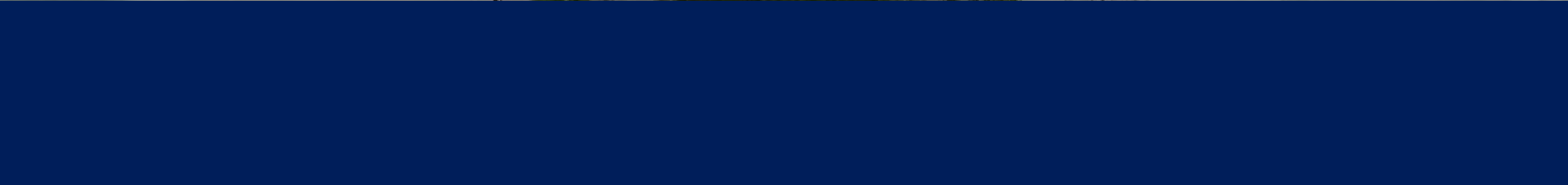




For Lease: Class "A" - Manufacturing and Distribution Facility

798 East Heil Avenue

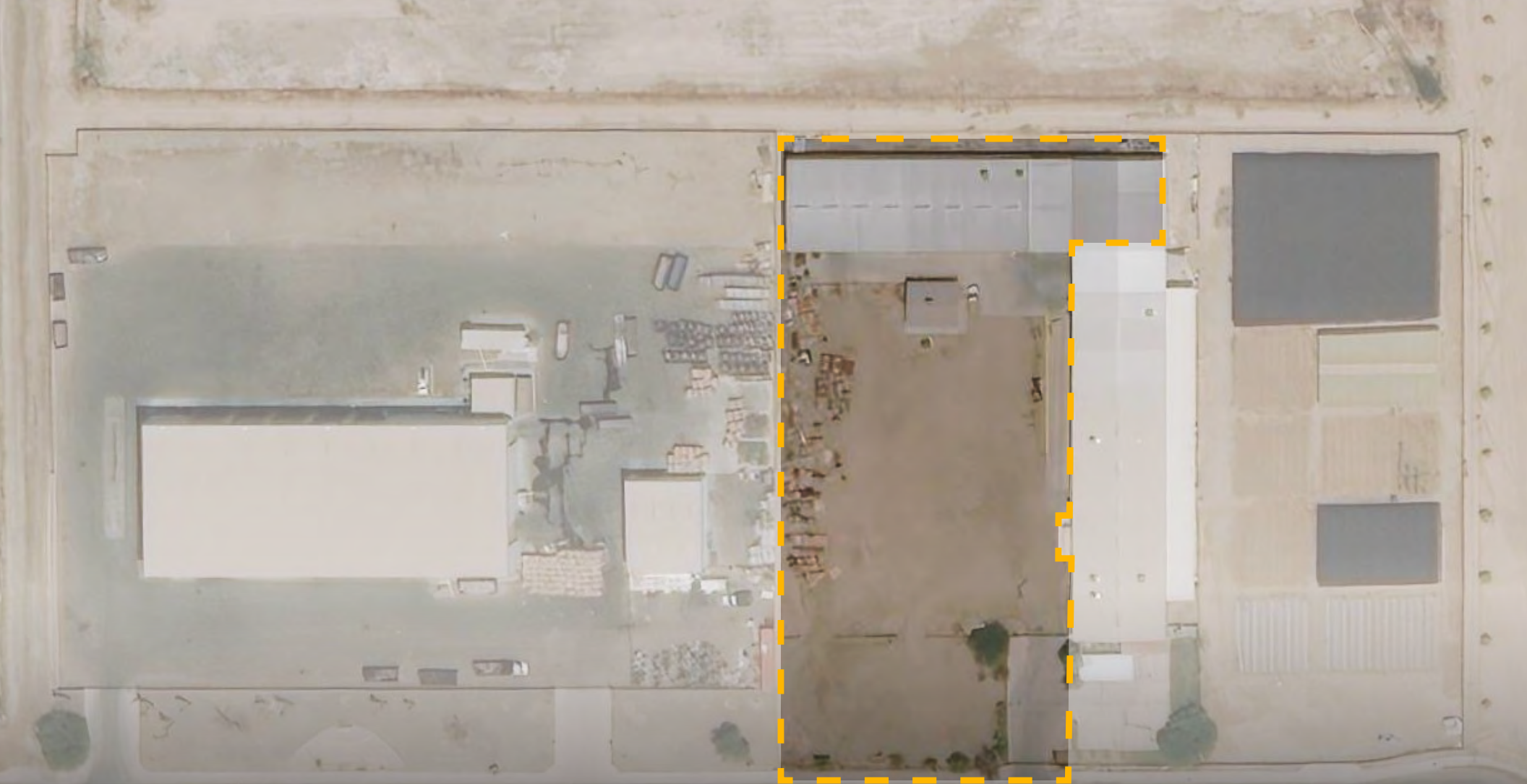
El Centro, CA 92243





Phase 1: Available Now

798 East Heil Avenue • El Centro, CA 92243



E Heil Ave

E Heil Ave

E Heil Ave

E Heil Ave

E Heil Ave

Phase 1: Available Now

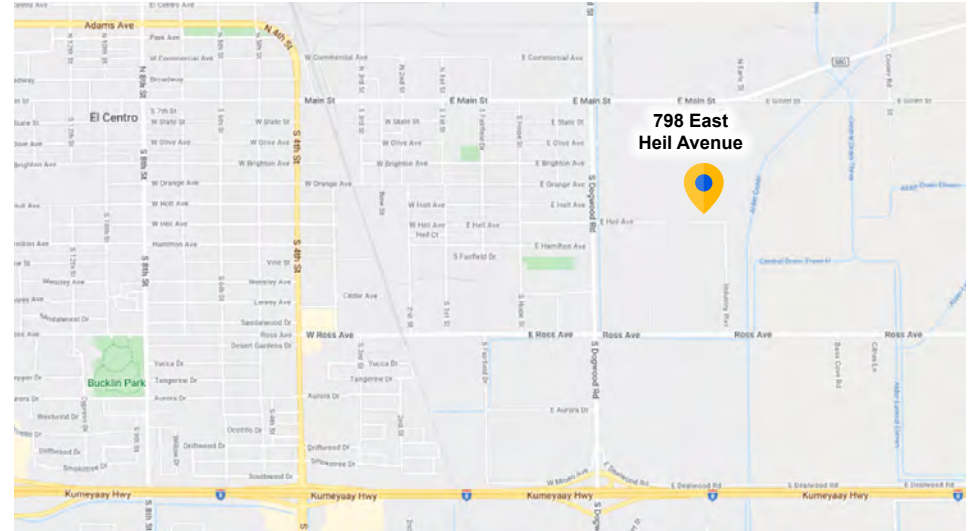
798 East Heil Avenue • El Centro, CA 92243

Phase 1: Available Now

For Lease: Class "A" - Manufacturing and Distribution Facility

798 East Heil Avenue

El Centro, CA 92243



Type	“Turn-Key Class “A” Industrial Site
Premises	3 Buildings consisting of 13,990 SF (790 SF office) + 1.5 acre yard
Building 1:	9,600 SF • Warehouse
Building 2:	3,600 SF • Warehouse
Building 3:	790 SF • Office & bathrooms
Total:	13,990 SF
Pricing	Contact broker
Additional Costs	Low property expenses/taxes
Separate Structure	Office space Bathrooms Storage room

Property Features

- Excellent ingress/egress
- Proximate to major Imperial, Riverside, and San Diego county thoroughfares
- Flexible zoning & use designations permitted
- Properties fully fenced
- Loading dock and parking lot
- Property fully equipped with over 65 cameras

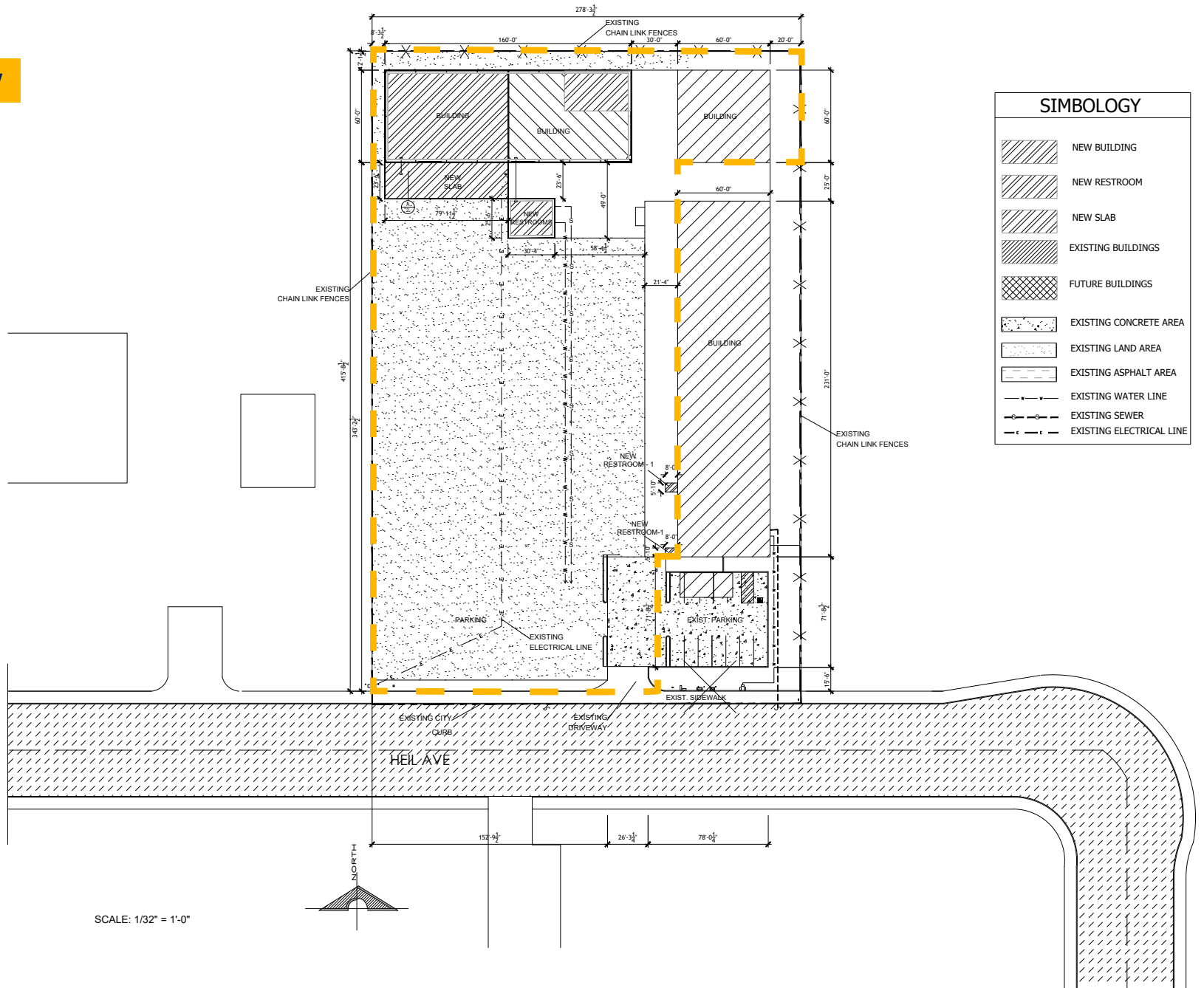
Phase 1: Available Now

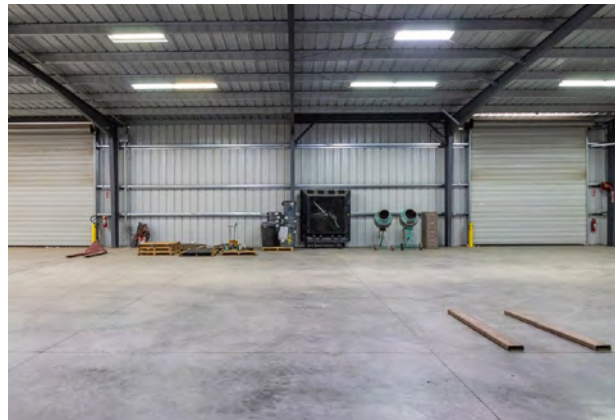
Site Plan: 798 East Heil Avenue El Centro, CA 92243



Phase 1:
Available Now

Site Plan:
798 East
Heil Avenue
El Centro, CA
92243







Phase 2: Entire site – Available January 1, 2023

798 East Heil Avenue • El Centro, CA 92243

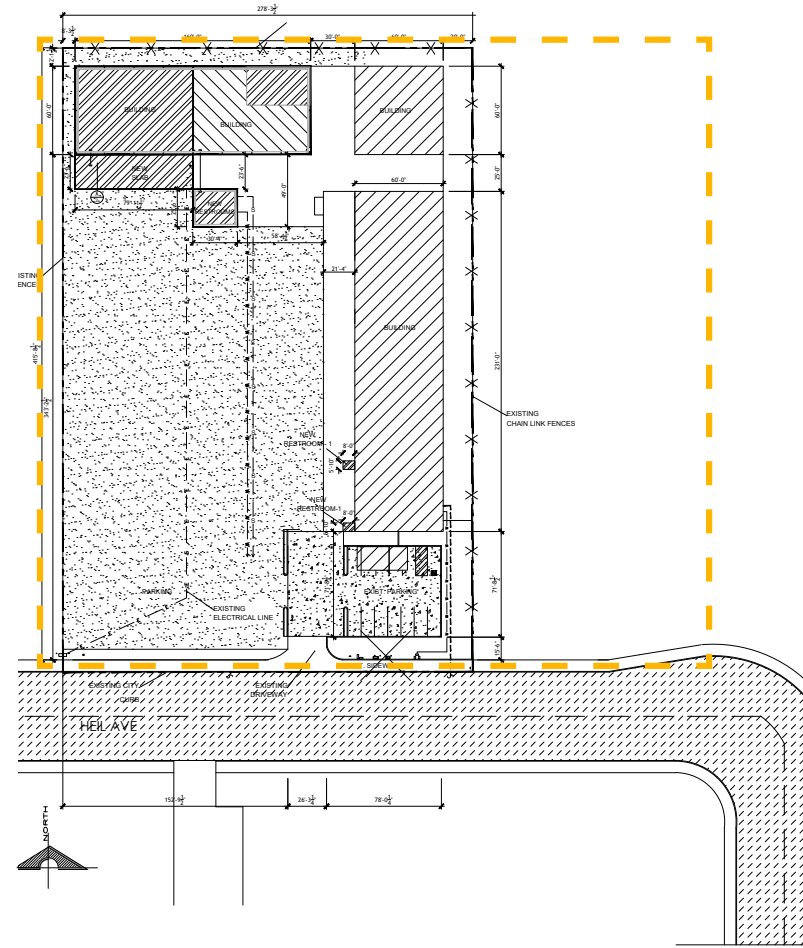
Phase 2: Entire site – Available January 1, 2023



E Heil Ave

E Heil Ave

E Heil Ave





Phase 2: Entire site – Available January 1, 2023

798 East Heil Avenue • El Centro, CA 92243



Phase 2: Entire site – Available January 1, 2023

798 East Heil Avenue • El Centro, CA 92243